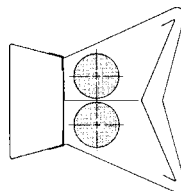
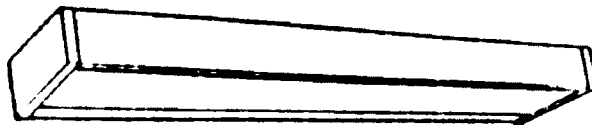
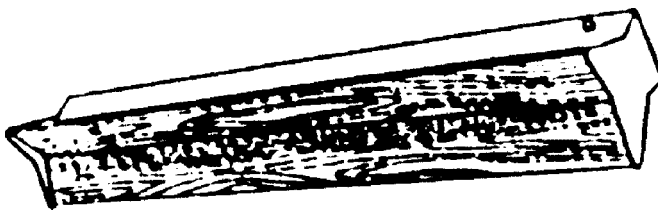


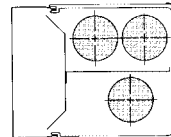
Job _____

Type _____

Catalog# _____



MC



WE

MC/WE SERIES

Health Care Lighting

APPLICATION

- Personal over-bed luminaire for health care facilities.
- Attractive, versatile models provide down-light for reading, up-light for ambient illumination or both up and down-light together.
- Night-light option available.

CONSTRUCTION

- Pressure-lock lampholders for good electrical contact and safe lamp retention.

MC Series

- Two 25, 30, 32 or 40 Watt lamps.
- Pull switch and grounded convenience outlet standard. Switch allows up-light, down-light and both. (120 Volt only)
- Metal reflector between lamps.
- Sturdy die-cast aluminum ends.

WE Series

- Two or three 25, 30, 32 or 40 Watt lamps.
- Pull switch and grounded convenience outlet standard. Switch allows up-light, down-light and both. (120 Volt only)
- Metal reflector between lamps.
- Ends remove for access to lens and for relamping.
- White acrylic lens with linear ribs.

FINISH


MC Series



- Baked white enamel.
- Walnut wood-grain vinyl face and beige painted ends or white painted ends and face.

WE Series

- Walnut wood-grain vinyl unit or white painted unit.

ELECTRICAL

- Energy-saving and electronic Class P, CBM/ETL certified, HPF ballasts comply with Federal Energy Efficiency Standards. 

-  listed and  listed.

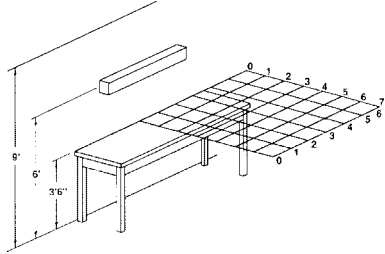
- I.B.E.W. labeled.



MC/WE SERIES Health Care Lighting

PHOTOMETRIC DATA

Typical initial footcandles on horizontal plane 36" above floor. Model room 12' x 14' x 9' with 80% ceiling, 50% wall and 20% floor reflectance. For 20 Watt lamps multiply values by 0.4, 30 Watt lamp by 0.72 and one lamp fixture by 0.5.



MC24048-BE1G with two 40W 3200-lumen lamps							
Distance from wall	Distance to side						
	0'	1'	2'	3'	4'	5'	6'
1'	99	89	62	33	17	10	7
2'	59	54	41	25	15	10	7
3'	28	27	22	16	11	8	6
4'	15	15	13	11	8	7	5
5'	10	10	9	8	7	6	5
6'	8	8	7	6	5	5	4
7'	6	6	6	5	5	4	4

WE34048-BE1G with two 40W 3200-lumen lamps							
Distance from wall	Distance to side						
	0'	1'	2'	3'	4'	5'	6'
1'	74	66	45	26	14	8	6
2'	43	39	29	19	12	8	6
3'	26	24	19	14	10	8	6
4'	17	16	14	11	9	7	5
5'	12	11	10	8	7	6	5
6'	9	9	8	7	6	5	4
7'	7	7	6	5	5	4	4

ORDERING GUIDE

MC 2 40 48 - BE 1 G

WE 3 40 48 - BE 1 SA G

Series	No. Lamps	Lamp Style	Fixture Size	Ballasts	Volts	Color	Options
MC	2	25	03	EO, ET	1	G, W	
MC	2	30	03	BE, BH, BL	1	G, W	
MC	2	32	48	EO, ET	1	G, W	
MC	2	40	48	BE, BH, BL	1	G, W	

Series	No. Lamps	Lamp Style	Fixture Size	Ballasts	Volts	Lens	Color	Options
WE	2, 3	25	03	EO	1	SA	G, W	
WE	2, 3	30	03	BE, BH, BL	1	SA	G, W	
WE	2, 3	32	48	EO	1	SA	G, W	
WE	2, 3	40	48	BE, BH, BL	1	SA	G, W	

LAMPS:

- 17 - 17 Watt T8
- 20 - 20 Watt T12
- 25 - 25 Watt T8
- 30 - 30 Watt T12
- 32 - 32 Watt T8
- 40 - 40/34 Watt ES T12

BALLASTS:

- BE - 430 ma Rapid Start Energy Saving
- BH - 430 ma Trigger Rapid Start High Power Factor
- BL - 430 ma Trigger Rapid Start Low Power Factor
- EO - 265 ma Electronic
- ET - 430 ma Electronic
- OT - 265 ma Magnetic

VOLTS:

- 1 - 120 Volts
- 4 - 277 Volts
- 9 - Universal Voltage

Note: Switch is not available with 277 volts

LENS:

- SA - White Acrylic

COLOR:

- W - White
- G - Walnut wood grain

OPTIONS:

- F1 Fusing, one per fixture
- NL3 Night-light, 6 Watt incandescent lamp
- R For one lamp up and two lamps down (WE Series)
- RF1 Radio Interference Filter, one per fixture

Emergency ballast - Please consult Options section of catalog.

DIMENSIONS

specifications and dimensional data subject to change without notice

