

THE
Design-Flex
LED COLLECTION

Quality LED Recessed & Surface Mount Luminaires

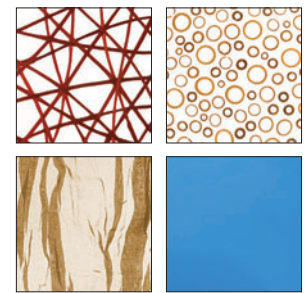
Exceptional Design, Versatility & Performance



LUMAX
LIGHTING

The Exciting And Unique Design-Flex Collection – Now Available Exclusively From Lumax Lighting!

The Design-Flex Collection features exciting architectural elements and exceptional performance. This LED recessed and surface mount collection includes the AFX and AFF Series – the most versatile in the industry – with endless possibilities for totally unique custom design. The exclusive lens selection options allow for lighting to become as much a part of a space's design plan as floor, wall and window coverings are.



Enhance the overall look and feel of any space with our limitless possibilities in lens customization. Accent any décor, enhance any theme, showcase any company, school or team with exciting design options in beautiful film, fabric and other materials.

AFX & AFF LED

Outstanding Quality, Exclusive Design Options

Originally fabricated by Lumax Lighting with a proprietary internal reflector design to optimize fluorescent lumen output, the AFX and AFF LED Series are now in demand – not only for outstanding quality and energy efficiency – but also for amazing aesthetic enhancement capabilities for any space.

Both the AFX and the AFF LED are available with standard double frost center lens and single frost side lens with customized design details available from a palette of fabrics, translucent colored lenses, and extraordinary high transmission film with design options that include Triple Wave and TriPyramid. Other options use designer acrylics incorporated with unique recycled and natural elements such as bamboo, grass, fiber, metal and other textures, colors and patterns that create a distinctive multi-dimensional appearance.

AFX and AFF LED fixtures are fabricated with superior structural features. Housing is available in 20-gauge steel body for added durability. Door frames can be selected in cold rolled steel or a regressed extruded aluminum frame for more contour to complement the smooth sight lines that gently integrate the frame with the housing. In contrast to the AFX's pitch side lenses, the AFF LED offers side lenses that lay snugly flat along the same plane as do the center lens.



LDE LED Lyric Series

Full Volume Light Transmission

The Lyric Series has elevated full volume lighting to a new level. The Lyric LDE LED features a deliberately controlled internal light source that uses an optimal reflector to precisely control lumen emission. Light transfers through a highly transmissive lensing choice, including formed faceted acrylic or designer film (available in the popular Triple Wave, Perf or striped patterns) with a 90% plus transmission of light. The LDE Edge has a central peak on the door's exterior frame and facets complement the acrylic lens' shape. These fixtures can be ordered in recessed or surface mount styles in 2x2, 2x4 or 1x4 sizes and painted to complement any interior décor.

LG LED Lensed Grid

Affordable, High Performance

The Lumax Lighting LED Collection now includes standard lensed LG LED recessed fixtures that are perfect for general applications. A selection of LG LED boards and drivers accommodate various light level and energy requirements. For added durability, the LG LED is available in 20-gauge cold rolled steel housing.

The LG LED is considered the best economical choice in lighting for schools, offices, retail space, restaurants and other commercial or institutional uses.



GL LED Graphic Lensed Luminaire

Visually Appealing Graphic Lens Options

The Graphic Lensed LED is designed to create a pleasant scenic effect with images from nature and the outdoors. It is a great choice for enhancing doctors' and dentists' offices, health care facilities or any space where anxiety and stress reduction is helpful.



Each luminaire is fabricated at the Lumax Lighting plant in Altoona, Pennsylvania, from metals or aluminum of U.S. origin, typically from mills in Pennsylvania and Ohio. Care is taken to procure other parts and paint from nearby suppliers to reduce environmental impact and produce the most eco-friendly fixture possible.

APPLICATION	CONSTRUCTION	ELECTRICAL
<p>AFX LED & AFF LED</p> <p>Offices, hospitals, healthcare, dining, schools, retail, convenience stores, lobbies, corridors, conference spaces.</p>	<ul style="list-style-type: none"> • Die form code gauge cold rolled steel, available in 20-gauge • Static and heat removal models available • Wide selection of shielding and lens media • Integrated EQ clips • Access plates for easy power connection • Door frames available in steel or regressed aluminum • Gaskets to prevent light leakage 	<ul style="list-style-type: none"> • High efficiency constant current LED driver operates LED's at 350 MA for cool long life operation • Mid power LED boards available in 3500k, 4000k and 5000k • Smooth even illumination with 50,000 hrs. L70 service life • Led boards are individually replaceable • Driver quick disconnect is standard • ETL listed • IBEW labeled • 5 year limited warranty on LED boards and drivers
<p>LDE LED</p> <p>For offices, lobbies, corridors, schools, hospitals and other healthcare facilities. 80+ CRI LED light source provides excellent color rendering.</p>	<ul style="list-style-type: none"> • USA milled die-formed housing exceeds code gauge • Full body swing down door frame, available in steel or regressed aluminum • Low glare faceted acrylic lens or highly transmissive film lens options with clear acrylic • Integrated EQ clips • Access plates for easy power connection • Gaskets to prevent light leakage 	<ul style="list-style-type: none"> • High efficiency constant current LED driver operates LED's at 350 MA for cool long life operation • Mid power LED boards available in 3500k, 4000k and 5000k • Smooth even illumination with 50,000 hrs. L70 service life • Led boards are individually replaceable • Driver quick disconnect is standard • ETL listed • IBEW labeled • 5 year limited warranty on LED boards and drivers
<p>LG LED</p> <p>Good flexibility and economy for commercial, retail, institutional lighting and other general purpose lighting.</p>	<ul style="list-style-type: none"> • Die form code gauge cold rolled steel, available in 20-gauge • Static and heat removal models available • Wide selection of shielding and lens media • Integrated EQ clips • Access plates for easy power connection • Door frames available in steel or regressed aluminum • Gaskets to prevent light leakage 	<ul style="list-style-type: none"> • High efficiency constant current LED driver operates LED's at 350 MA for cool long life operation • Mid power LED boards available in 3500k, 4000k and 5000k • Smooth even illumination with 50,000 hrs. L70 service life • Led boards are individually replaceable • Driver quick disconnect is standard • ETL listed • IBEW labeled • 5 year limited warranty on LED boards and drivers
<p>GL LED</p> <p>Outstanding flexibility with wide selection of scenes to choose from, including sky images like clouds and sea images like coral reef. Great for medical, healthcare, retail and institutional applications.</p>	<ul style="list-style-type: none"> • High quality acrylic graphic panel installed in door frame • Die form code gauge cold rolled steel, available in 20-gauge • Static and heat removal models available • Wide selection of shielding and lens media • Integrated EQ clips • Access plates for easy power connection • Door frames available in steel or regressed aluminum • Gaskets to prevent light leakage 	<ul style="list-style-type: none"> • High efficiency constant current LED driver operates LED's at 350 MA for cool long life operation • Mid power LED boards available in 3500k, 4000k and 5000k • Smooth even illumination with 50,000 hrs. L70 service life • Led boards are individually replaceable • Driver quick disconnect is standard • ETL listed • IBEW labeled • 5 year limited warranty on LED boards and drivers



Chestnut Avenue & 4th Street
 P.O. Box 991
 Altoona, PA 16603
 814-944-2537 • Fax 814-944-6413
lumaxlighting.com